

Genyx TL

Systems for the production and sale of concrete

INTRODUCTION TO THE SYSTEM



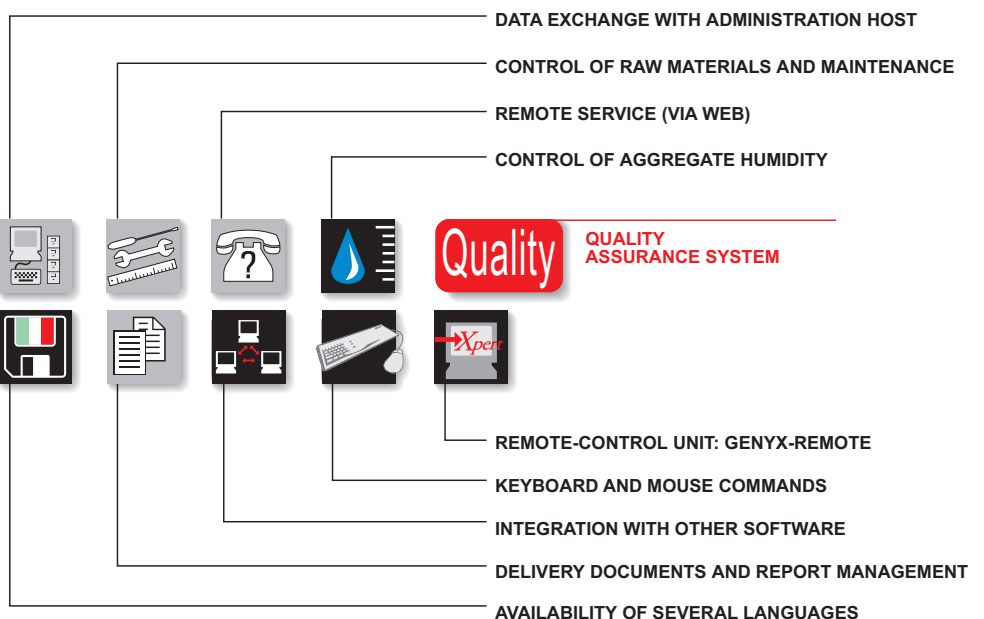
Studied specifically to automatize and manage plants for the PRODUCTION and SALE of CONCRETE, the GENYX/TL system is developed on PC-PLC commercial hardware, easy to find and service. The powerful and completed software that supervises and controls the plant is WINDOWS native, to make it compatible and installable with the most widespread operating system on the market.

The system allows AUTOMATIC, SEMI-AUTOMATIC and MANUAL management of the entire concrete production cycle, starting from delivery orders. According to the cubic meters required and the formula that is used, the system will calculate the net quantity required for each raw material, overseeing its batching and discharge following customized sequences. It also compensates and optimizes any batching errors thanks to a complex self-correction algorithm.

GENYX/PF offers to the user a full range of performance features that make it far more than a simple automation: it is a complete PLANT MANAGEMENT SYSTEM. Some of these features include: delivery ORDER management, DELIVERY DOCUMENTS management, MIX REPORT files and management, management of incoming and outgoing RAW MATERIALS, planned MAINTENANCE, filing and browsing of PRODUCTION DATA even after many years, DATA INTERFACE towards accountancy softwares through networks and modems.

GENYX/PF allows a graphically customized supervision for each specific type of concrete batching plant: HORIZONTAL types, TOWERS, DRAG LINES, plants with ONE, TWO or THREE MIXERS. Comprehensive configuration parameters also allow the system to be installed easily for EXISTING plants that normally have mechanical characteristics that make them more difficult to control.

On request, the system can supervise and control the concrete delivery process by means of SATELLITE LOCATORS (GPS), control the CONSISTENCY of the mix with specific radio devices, integrate production data with PRICE LISTS and INVOICING, optimize the DISPATCH SCHEDULE, control the plant's loading point through VIDEOCAMERA, connect to our REMOTE SERVICE (via web).

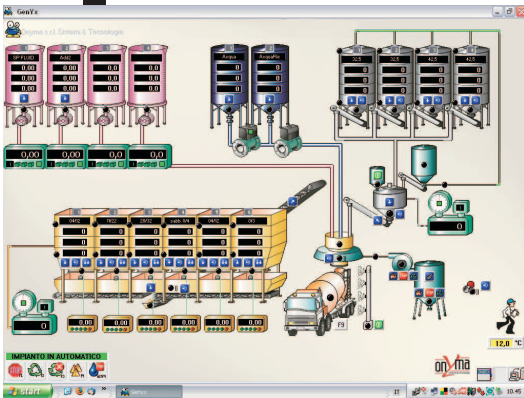


DIRECT SERVICING

Customer Service

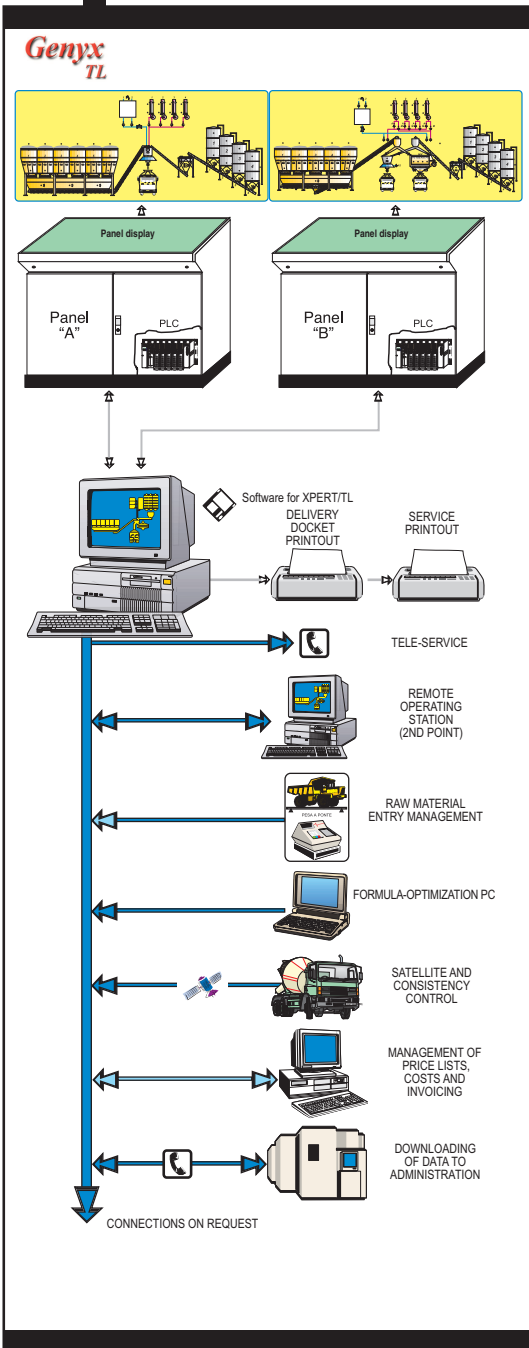


SYSTEM PERFORMANCE



▲ EXAMPLE OF DISPLAY SCREEN

▼ SYSTEM STRUCTURE



- CONTROL of dosage and discharge valves/motors/etc. from the plant's synoptic (mimic) page, point and click with the MOUSE.
- MENU SYSTEM to give the operator the easiest and clearest approach.
- OPERATION with MULTITASKING technology to allow the operator to carry out several functions simultaneously.
- SUPERVISION of the production PROCESS through an animated display customized for the plant.
- Input and execution of the DAILY PRODUCTION program, ORDERS management, DELIVERY DOCS printing and management (UNI norms).
- Setting of the CONFIGURATION PARAMETERS to allow optimum utilization of the plant's mechanical characteristics.
- Aggregate HUMIDITY COMPENSATION in automatic (by probes) or manual (keyboard), with correction of aggregates and water quantities.
- ASSOCIATION OF THE COMPONENTS with their own extractor. If there is a lack of material, the extraction point can be replaced with a different one even during the batching phase.
- LOADING SEQUENCE that can be set for each formula, in order to regulate the entry sequence of the components, mixing times and most suitable discharge times.
- Real-time CONTROL of all the LOADING PHASES to optimize production time and the consumption of raw materials.
- Automatic FRACTIONING of the requests according to the capacities of the plant and the mixer.
- Batching of all components with DOUBLE EXTRACTION SPEED.
- SIMULTANEOUS BATCHING MANAGEMENT from the silos or hoppers containing equal components in order to accelerate extraction.
- HEAD WATER delivery in the truckmixer as a percentage, based on the quantity theoretically required for the mix.
- PROPORTIONAL LOADING of all the components on the vehicles in order to optimize mixing.
- DATABASE MANAGEMENT for the files referring to formulas, clients, workyards, vehicles, delivery documents, consumptions, reports, etc.
- Free CONFIGURABILITY for all data printed on the delivery document, in order to adapt to any printout format, customized for each company.
- MATERIAL INVENTORY CONTROL in real time, with automatic indication of the minimum stock level. The quantities input through the keyboard will be deducted automatically during both the automatic and manual cycle.
- AUTOMATIC DAILY FILING of all totalizers (automatic consumption by component, manual consumption by component, cubic meters produced per formula, client, vehicle, etc.). Other totalizations or statistical controls can be done based on the client's specific request.



- IBM compatible PERSONAL COMPUTER Pentium 4 3GHz
- 1 Hard Drive with 40 Gb
- 1 Drive for 3"1/2 diskettes (1.44 Mb)
- 1 RS232 serial port
- 4 USB port, Ethernet, CD Rom
- 1 CENTRONICS parallel port
- 1 WINDOWS XP operating system
- 1 CRT 17" color monitor
- 1 serial module (485) for PC/PLC communications
- 1 PLC with input/output cards

- FILING of the DELIVERIES and MIXES (reports) on magnetic media, for browsing, printing or transfer via disk/network to host computer.
- Management of the MAINTENANCE FORMS of the plant parts and vehicles (by cubic meters produced/time/cycles).
- RECORDING of MANUAL BATCHING done manually directly from the control panel.
- Management of ALARM HISTORY for browsing and printing by time or by type.
- DATA FILING on removable magnetic media for backup copies, in order to restore them in case of PC repair or replacement.
- CALIBRATION of SCALES and operating TESTS of the inputs and outputs directly from the PC.
- PROTECTION of the sensitive functions and reserved data via SOFTWARE KEYS. Definition of several key levels for different levels of protection.